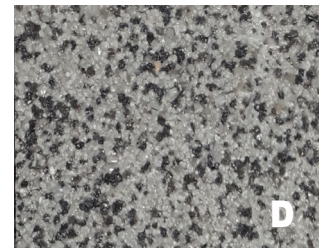
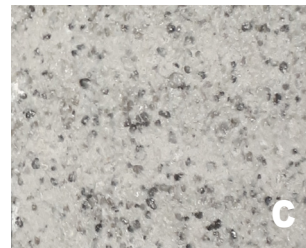
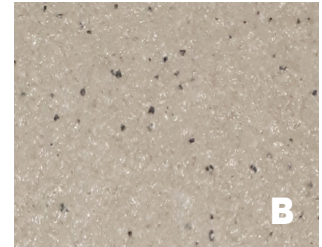
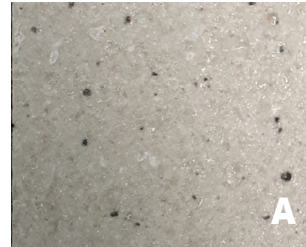


**PRODUCT DESCRIPTION**

**Description** Ceramic pavers for patios and walkways made from recycled materials with an anti-skid finish. Best used with VR Paver Pedestals.

**Options** Available in different finishes:  
A: Ecrú  
B: Sandstone  
C: Light Speckled Granite  
D: Dark Speckled Granite



**PRODUCT PROPERTIES**

**Materials** Recycled Ceramics

**Water Absorption** 1.23 %

**Dimensions**

**Width x Length** 23.6 in x 23.6 in (600 mm x 600 mm)

**Breaking Strength** 5410 N

**Thickness** 0.79 in (20 mm)

**Modulus of Rupture** 3481 PSI (24 mPa)

**Weight** 9.6 lb/ft<sup>2</sup> (46.7 kg/m<sup>2</sup>)

**Resistance to Staining** Class 5

# PRODUCT SPECIFICATION DATA SHEET

## VR Paver CeraCycle

PRECAST PAVERS FOR  
USE ON PATIOS AND WALKWAYS

### GUARANTEE / WARRANTY

Tremco Incorporated warrants VR Paver CeraCycle to be free of defects and to meet published physical properties when tested according to ASTM and Tremco standards. Under this warranty, any VR Paver CeraCycle product that is proved to be defective when applied in accordance to our written instructions, and in applications recommended by Tremco as suitable for this product will be replaced with like product at no charge.

THIS IS BUYER'S SOLE AND EXCLUSIVE REMEDY.

All claims concerning product defects must be made in writing within twelve (12) months of shipment. The absence of such claims in writing during this period will constitute a waiver of all claims with respect to such product. This warranty shall be IN LIEU OF any other warranty, express or implied, including but not limited to, any implied warranty of MERCHANTABILITY OR FITNESS FOR A PARTICULAR PURPOSE.

© 2020 Tremco Incorporated



**Tremco Incorporated**  
www.tremcoinc.com

UNITED STATES  
3735 Green Road  
Beachwood, OH 44122  
1.800.562.2728

CANADA  
50 Beth Neelson Drive  
Toronto, ON M4H 1M6  
T: 1.800.668.9879

Tremco Roofing & Building Maintenance is a part of the Tremco  
Construction Products Group